



2010.

, 2011.

	3
	3
1.	5
2.	11
3.	22
4.	24
	26

2010.

).

(

je

2010. (

31.12.2010.)

:

2009.

80.)

1.

~
~

;

a

,

;

- 1.
- 2.
- 3.

o

:

1.

,

,

2.

()

3.

,

,

.

,

,

,

,

,

.

,

,

.

/

,

.

2010.
2011,

,

.

,

,

,

(

,

,

(

,

)

)

1.

13 (1.2.), :
 - 9 ,
 - 1 ,
 - 3

2 :
 - ” - , “
 - .

2010 1.889 , 1.469 ,
 1.172, 600, 1.

1.1



	(1.1.2010. - 31.12.2010.)	2010.	31.12.2010.
	959	1.019	767
	20	20	4
	340	390	340
	93	309	43
	57	151	18
	1.469	1.889	1.172

66%.

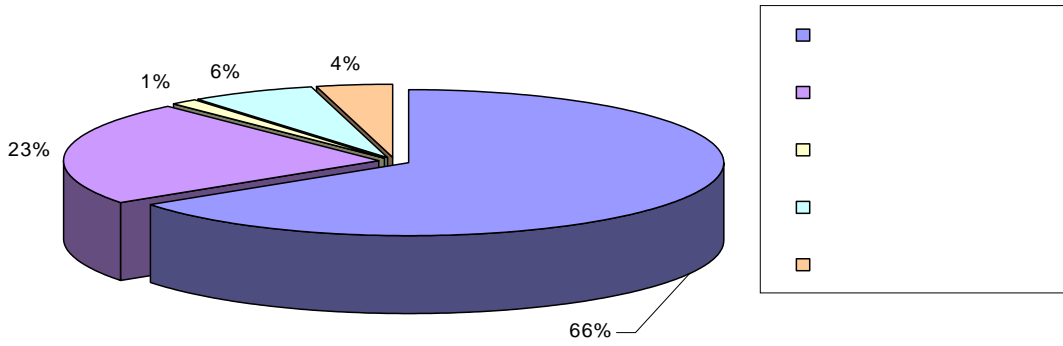
22%, 1%

.10%

7 . (

1.2.).

1.1.



45,	2009.	.	2010.	959,	20
2009	170	31.12.2010.	17	2009.	2009
	848.			767	
		2009.	(142).	2010.	150
		460	,	2009.	29.

1.2.

		2010.	2010.	31.12.10.	
1.	'	426	460	109	335
2.	“ ”	42	41	0	25
3.	“ ”	48	70	7	61
4.	“ ”	48	48	3	40
5.	“ ”	24	22	2	19
6.	“ ”	36	36	8	24
7.	“ ”	48	41	4	30
8.	, « .	120	136	19	111

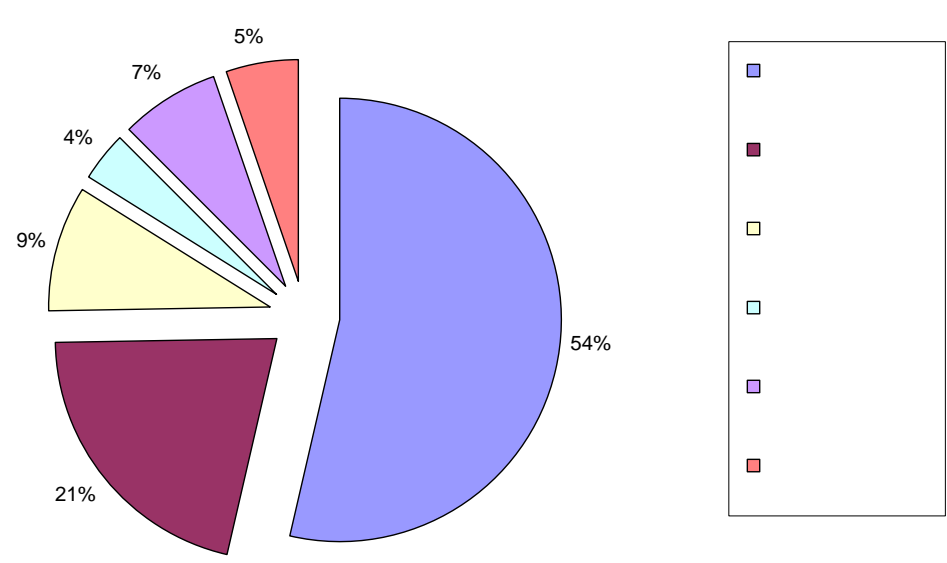
9.	“ ”	36	48	6	40
10.	“ ”	48	37	3	26
11.	“ ”	27	35	0	28
12.	“ ”	32	26	4	18
13.	“ ”	24	19	5	10
		959	1.019	170	767

2010. , 118.794 2,

(54%), (46%)

(1.2).

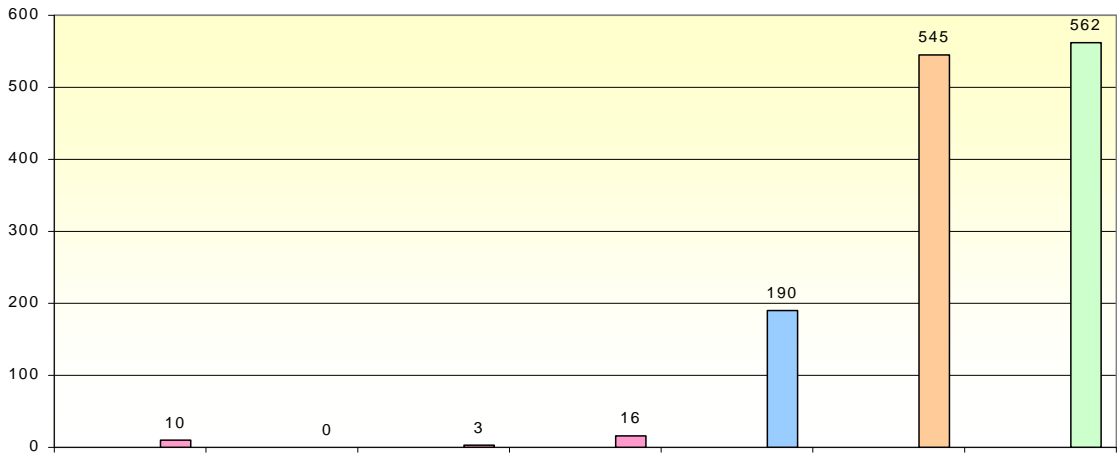
1.2.



1.3.

1.326 , 421

1.3.



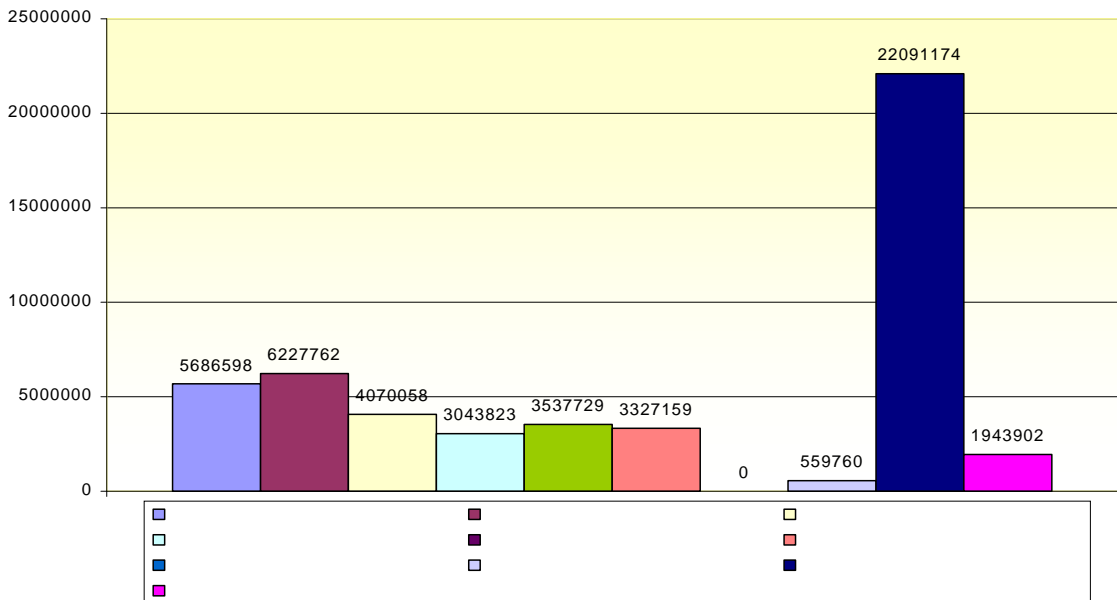
2010.

50.487.965,00

1.4.

1.4.

2010.



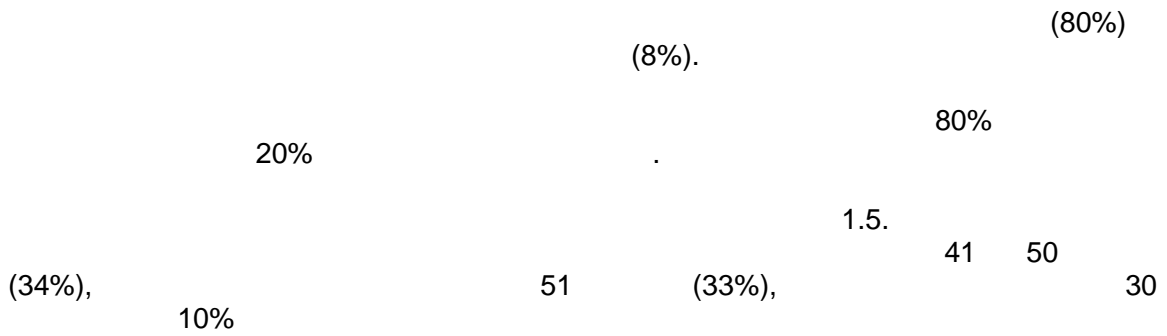
) , , (

1.3.

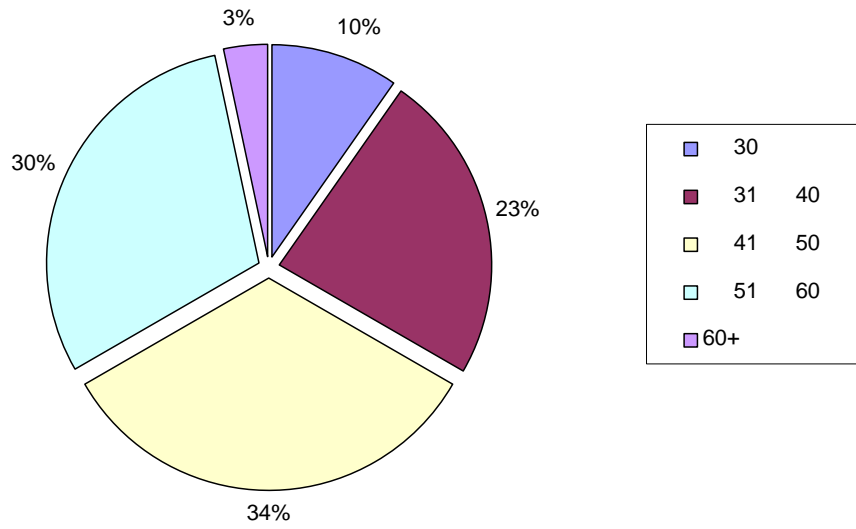
31.12.2009.

-	32	32	30	2	0	0
-	213	235	202	31	2	0
-	148	156	91	16	6	43
-	43	45	39	0	6	0
-	194	194	169	6	19	0
-	20	20	20	0	0	0
	650	682	551	55	33	43

2010. (1.3.)
(682/650).



1.5.



2010.

122

235

:

“(36

”

)

”

“(46

).

,

2010.

:

”

“

—

”

—

“

”

”

—

”

—

”

2.

5 (2.1. 2.1.), 155 15%
 (15-17 26%; 18 8 14 (32%) 50%
 - 27%).

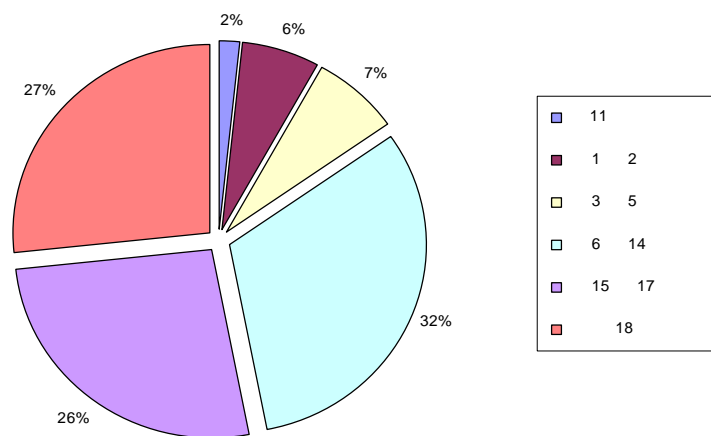
2.1.



	2010.	31.12.2010.	2010.	31.12.2010.	2009.	31.12.2010.
11	10	8	8	7	18	15
1 2	34	20	31	15	65	35
3 5	33	23	39	26	72	49
6 14	191	169	133	111	324	280
15 17	155	134	114	91	269	225
18	148	89	123	74	271	163
	571	443	448	324	1.019	767

2.1.

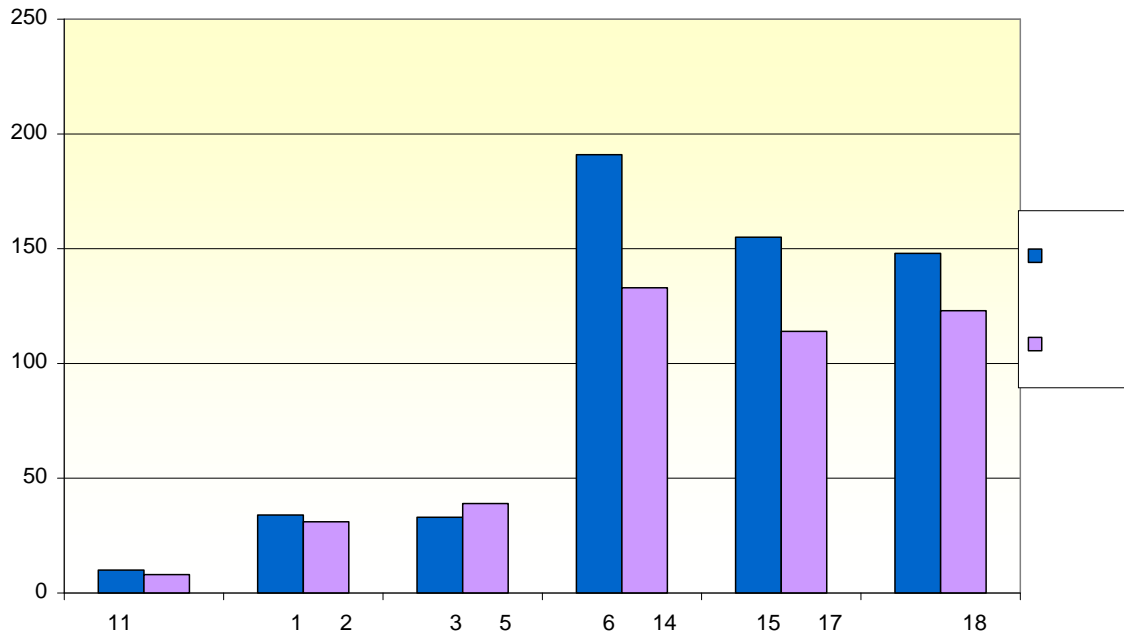
2010.



56,03%

43,96%.

2.2.



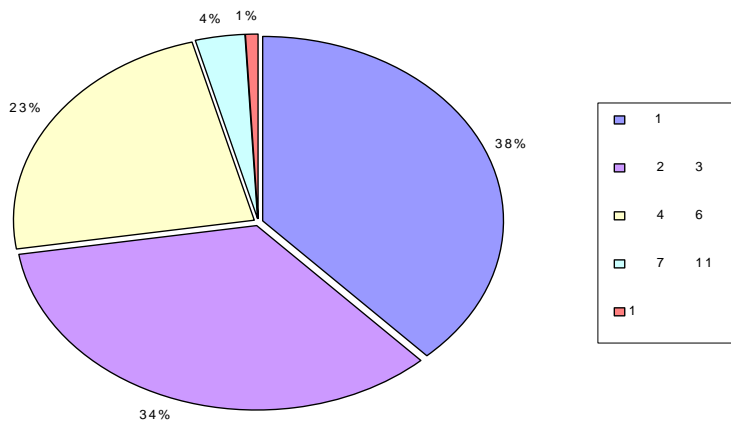
2010.

(38,13%).

2 3 (31.12.2010. 2.2). , 68,57%

2.2.

2010.



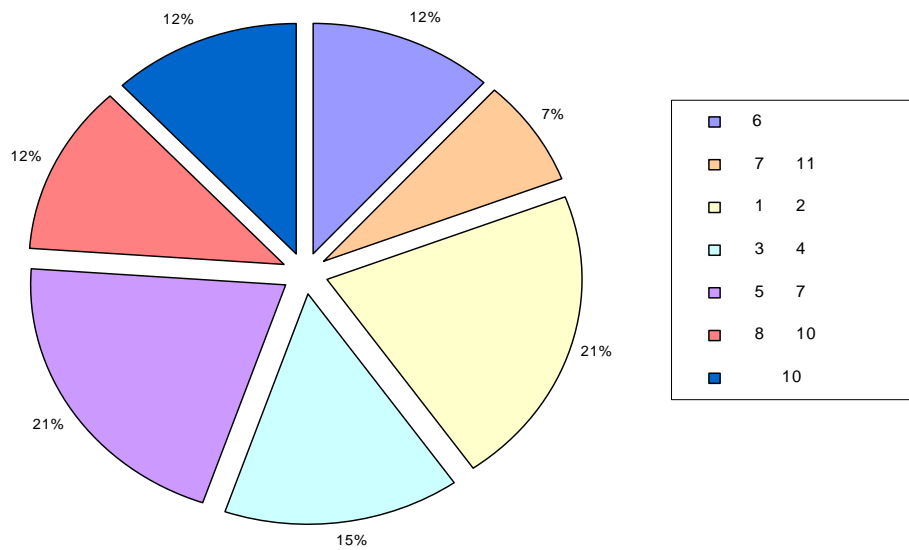
2.3.

	2010.	31.12.2009.
6	120	81
7 11	75	52
1 2	216	152
3 4	151	112
5 7	214	182
8 10	122	103
10	121	85
	1.019	767

70%,
 (21%) 5 7 (21%).
 60,72%. 59,65% 3 2009

2.3.

2010.



2009. (2009. 74.6%, 2010 80,84%). (2009. 25.56%, 2010. 19%)

2010. 5-7 23,5% 2009 21%
 2010. 1-2 13,72% 2009. 21,19%

(57%)

2009 , (2.4.). 20%,
 11%.

2.4.

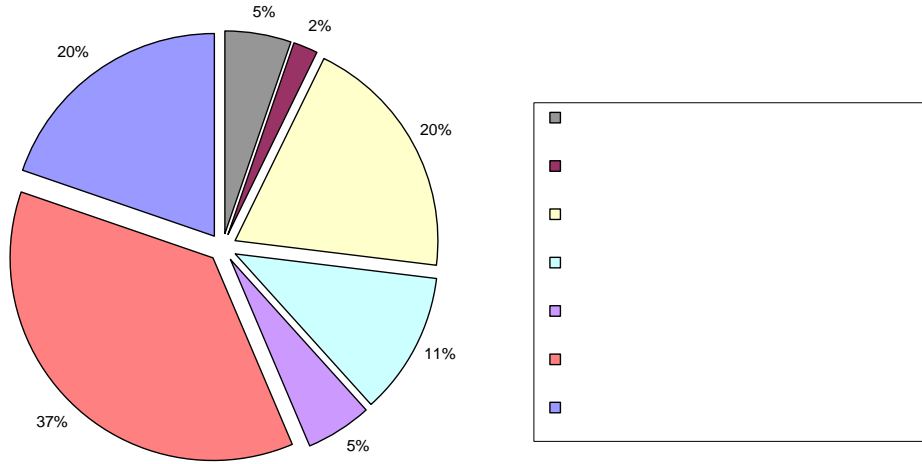


2010. 31.12.2010.

56	43
19	14
209	149
120	85
56	43
386	297
208	136
1.054	767

(31%),
 2% (2.4.) (5%),

2.4.



49,46%)

2009.

2.5.
(47.74% 2009.).

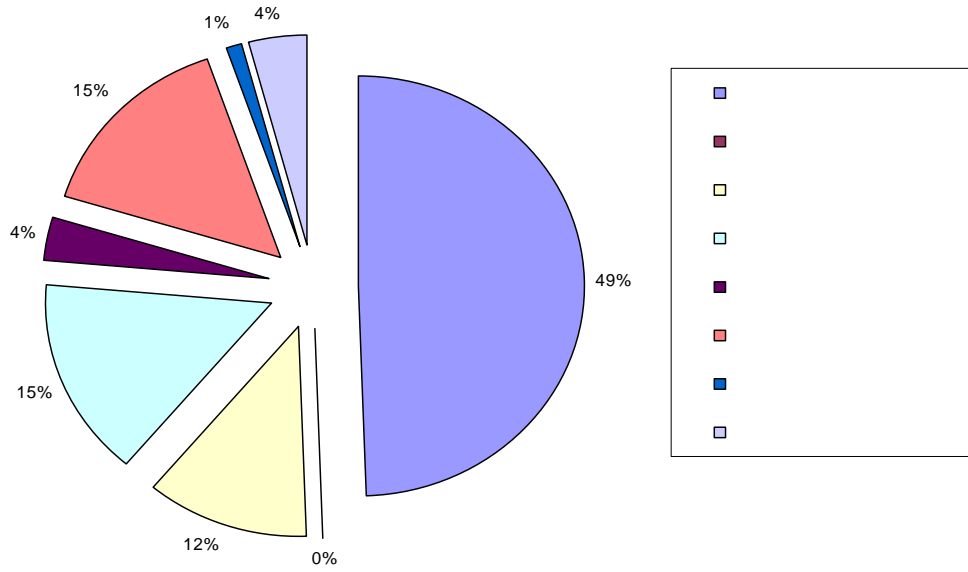
2.5



	2009.	31.12.2009.
	504	374
	1	0
	118	92
	154	122
	36	23
	152	114
	11	7
	43	35
	1.019	767

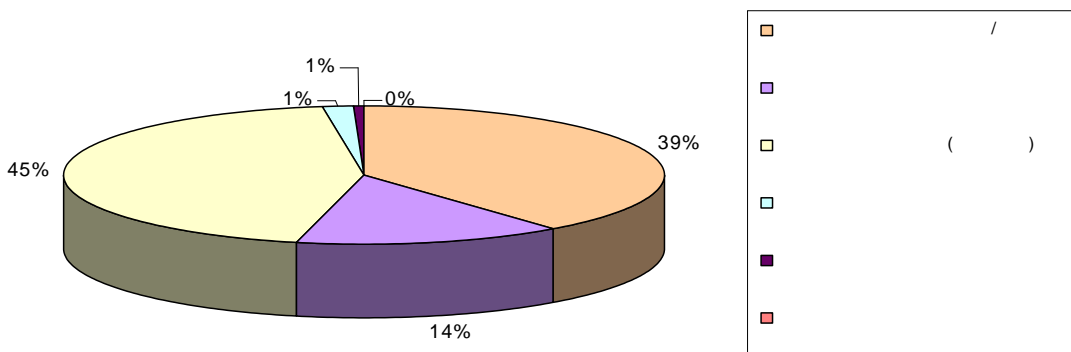
12% , 15%, 2009.), 19% (3% ,

2.5.



(2.6). (39%) / 14% 2%.

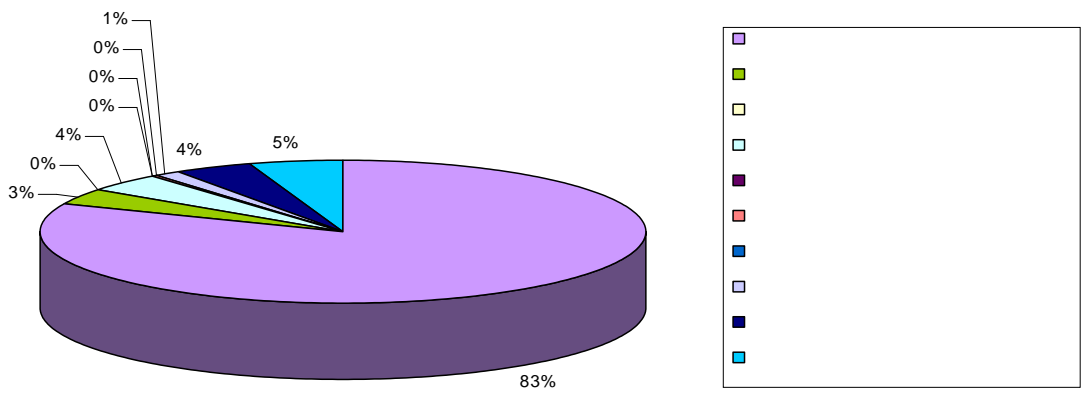
2.6.



31.12.2010. 12 185-¹ 2010. 240

42,9%
83%
5%
(2.7).
3,33% 4,17%
12 2010.

2.7.



3% (22%) 3% (36%)
, 20%

1

2.6. O



	2010.	31.12.2009.
-	219	154
-	37	28
	181	152
	187	154
	29	24
	27	13
	111	97
	115	95
	32	25
	46	14
-	9	3
-	26	8
	1.019	767

2009. ,

- : (16,26%

- 2009 18,35%)

- (1,79% 2009. 2,64% 2010.).

- (3,57%

- 2009 4,51% 2010).

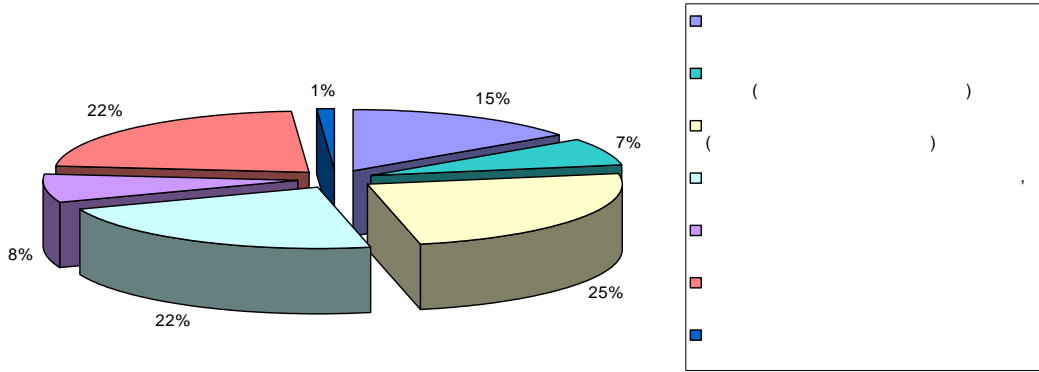
- (1,88%

- 2009. 2,55% 2010.)

, 2009. , 15%

(2.7). 30% , 7%

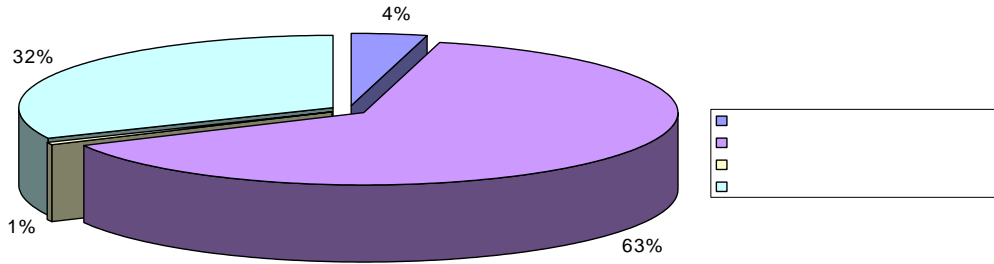
2.7.



23

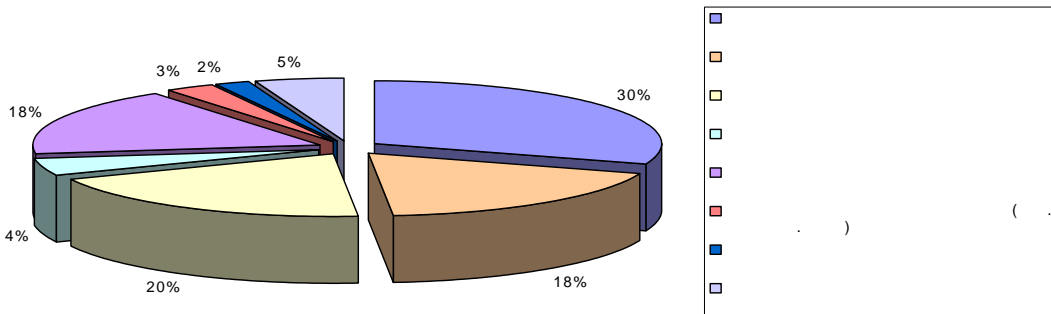
, , , 1%
 .
 2009., ()
 (19% 2009 25% 2010.) ,
 (17% 2009 22% 2010.)
 , 1%.
 (32%) (63%), 2.8.),
 (4%).

2.8.



2009., 60%)
 (2009. 34%)

2.9.



2009. :
 - 5%
 - 2009 7%
 2010. 20%,
 23% 2009. 18% 2010.
 - 8% 2009 4% 2010.

-
 (23% 2009 18% 2010.),
 2010 (72) 2009.
 (57).

2.9

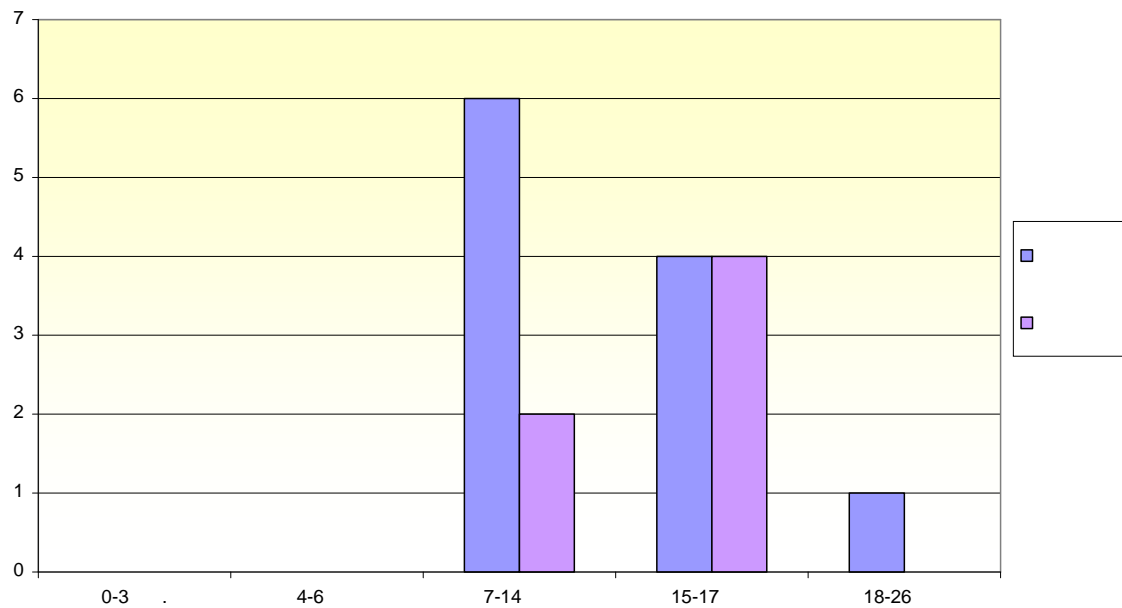
2010.

		27
”	“	4
”	“	4
”	“	4
”	“	3
”	“	2
”	“	4
”	“	7
”	“	5
”	“	3
”	“	5
”	“	3
”	“	1
		72

5) 8 (3

2010.
 , :
 (, ,)
 (, , ,) .

11 17. 2010. 5 13
 6.
 2.10



(14
), (2),
 (71,42%)
 (86,36%) 13,63%
 73,68% 66.66%

3.

3.1.



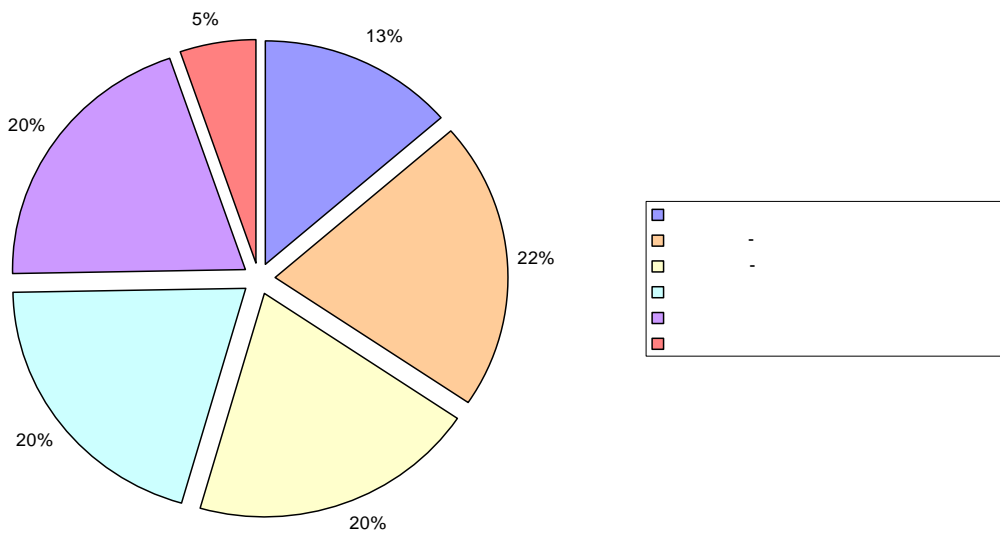
2009.

-	239	69
-	373	313
	350	238
	363	210
	351	174
	95	38
	1.771	1.042

(3.1),
 - 239
 - 350
 - 373
 - 3.1
 - 351
 - 363
 -

3.1.

2010.



, 442 , . 2010. 11

4.

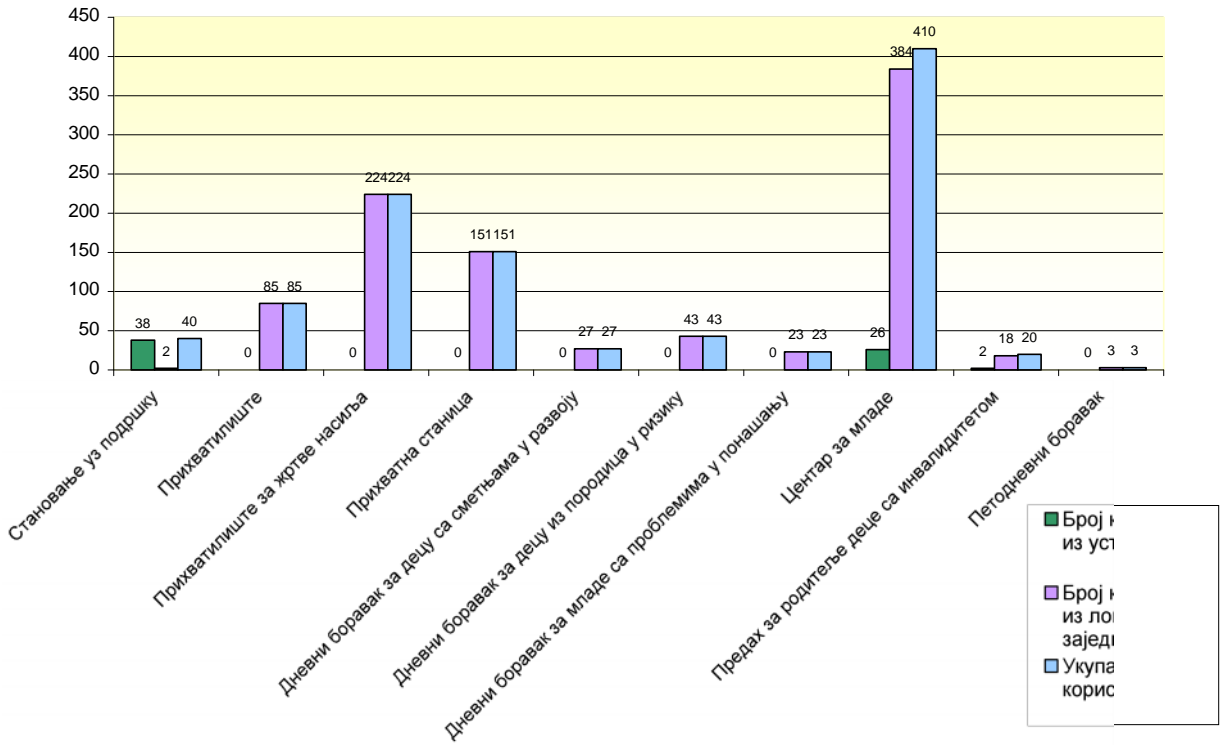
((,)),
 (, ,)).
 4.1, 13 11 ,

4.1. 2010.

1	40	,	,
2	85	,	,
3	224	,	,
4	151	,	,
5	27	,	,
6	43	,	,
7	23		
8	410		
9	15.130		
10	20		
11	3		

2010
 1026 (66 (6,43%)
 15.130).
 93,56% (960)

4.1.



2010. , 7

7.471.760,00

21

2010
(959),
(150)

1.469
(340)
(20).

2010.
, 390

1.889
, 20

1.019
460

(1)

2010	31.12.10	2009	31.12. 09	2008	31.12.08	
1019	776	1064	846	1194	912	

(,) , 2010. (1026

2009

(682/650).

8% , 80%

15
1 2

6%
11

(32%)

3 8% 6 14
5% 2009. 2% 2010.

(53%)

70%,

57%

83%
2009.
2010.
21
42,9%,
2010.
20%
7
2010.
2009.